



MYONGJI  
UNIVERSITY

YOUR  
FUTURE  
BEGINS  
HERE

ONE UNIVERSITY  
TWO CAMPUSES

SEOUL  
YONGIN

2026/27

2026/7 STUDY ABROAD AND INCOMING EXCHANGE GUIDE

# Study in Korea

## Seoul & Yongin

**One of the  
Safest  
Destinations  
Worldwide**

Global Peace Index Rankingsx



## Experience the Pulse of Seoul and the Serenity of Yongin

At Your campus at Myongji is determined by your faculty, ensuring you study in the environment best suited to your discipline.

**Seoul Campus:** The Heart of the Metropolis Home to the Humanities and Social Science faculties, our Seoul campus offers a quintessentially Korean urban experience. Located in a vibrant, trendy district, you are perfectly positioned to explore the city's historic palaces, world-class shopping, and legendary nightlife. With seamless transport links, the entire capital is your playground, offering endless opportunities for cultural immersion and professional inspiration.

**Yongin Campus:** A Scenic Academic Sanctuary Housing our Natural Science, Engineering, and Arts programmes, the Yongin campus provides a sprawling, tranquil environment. Surrounded by lush greenery, it offers a peaceful sanctuary for focused study and outdoor recreation. It is the ideal setting for those who appreciate the beauty of the Korean countryside while remaining within easy reach of the city.





55  
COUNTRIES



552  
UNIVERSITIES/INSTITUTIONS

A Partnership with over  
**550+** universities across  
**50+** countries worldwide

**Myongji University** has about **15,700** students, including around **2,000** international students, and offers **100+** academic programmes



SCAN TO LEARN MORE ABOUT MYONGJI UNIVERSITY

<https://international.mju.ac.kr/>



HUMANITIES CAMPUS  
SEOUL

NATURAL SCIENCE CAMPUS  
YONGIN

(+82) 2-300-1512 / 9  
mju\_inbound@mju.ac.kr

## STUDENT EXCHANGE PROGRAMME

### Nomination & Application

Application Deadline	
Spring	End of May
Fall	End of November

### Important dates

Spring Semester	
Classes start	3 March
Exams	8 June -15 June
Semester ends	15 June
Fall Semester	
Classes start	1 September
Exams	7 Dec -14 Dec
Semester ends	14 December

### Entry Requirements

Complete at least one full-time year of university study at the time of application and meet the language proficiency requirements for their chosen track. Applicants are required to submit an online application, academic transcript, nomination form or recommendation, a valid passport, and language test scores.

#### Korean Track

Students applying for courses taught in Korean must submit one of the following:

- **TOPIK Level 3** or higher
- Official proof of equivalent Korean language proficiency

#### Applicants from OECD member Countries

must submit:

- **Certificate of Enrolment (or Official Academic Documents)**
- **Bank Balance Certificate (6,000 USD per semester)**

#### English Track

If you are from a country where English is not recognized as an official first language, you must provide proof of English proficiency.

Accepted tests and minimum scores:

- **TOEFL iBT:** 70
- **IELTS Academic:** 5.5
- **TOEIC:** 750
- **CEFR:** B1 or
- Official proof of equivalent English language proficiency

#### Applicants from Non-OECD Countries

must submit:

- **Certificate of Enrolment (or Official Academic Documents)**
- **Bank Balance Certificate (8,000 USD per semester)**

AND

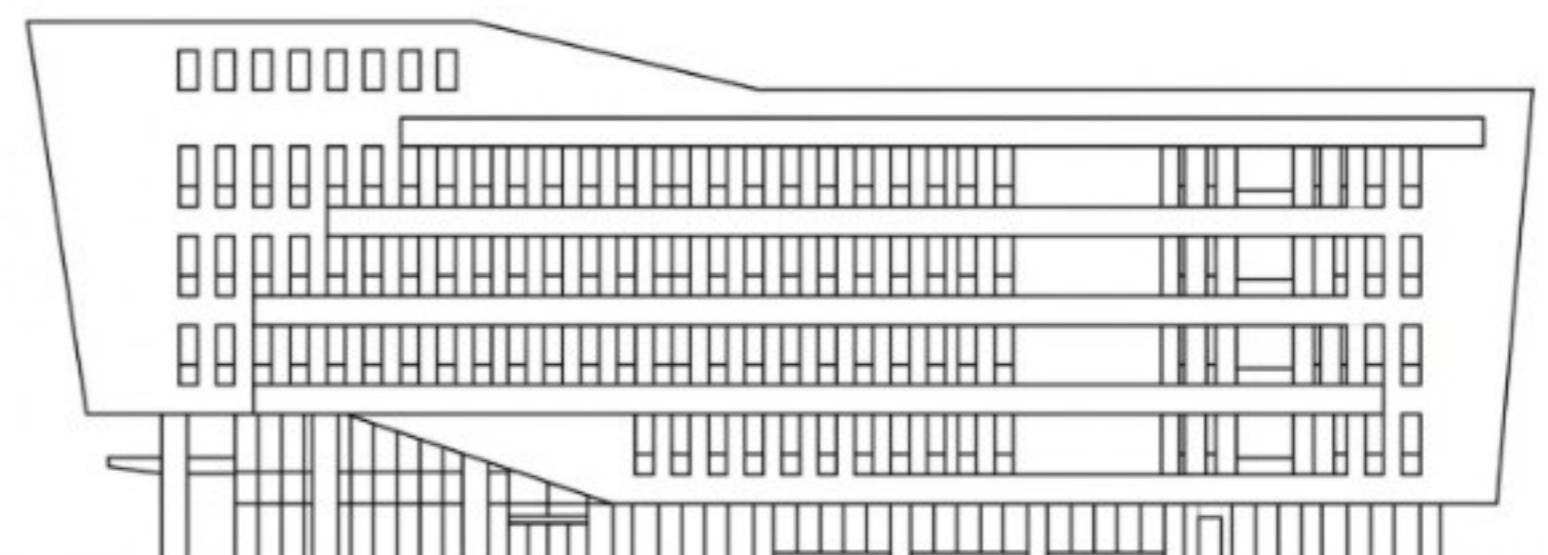
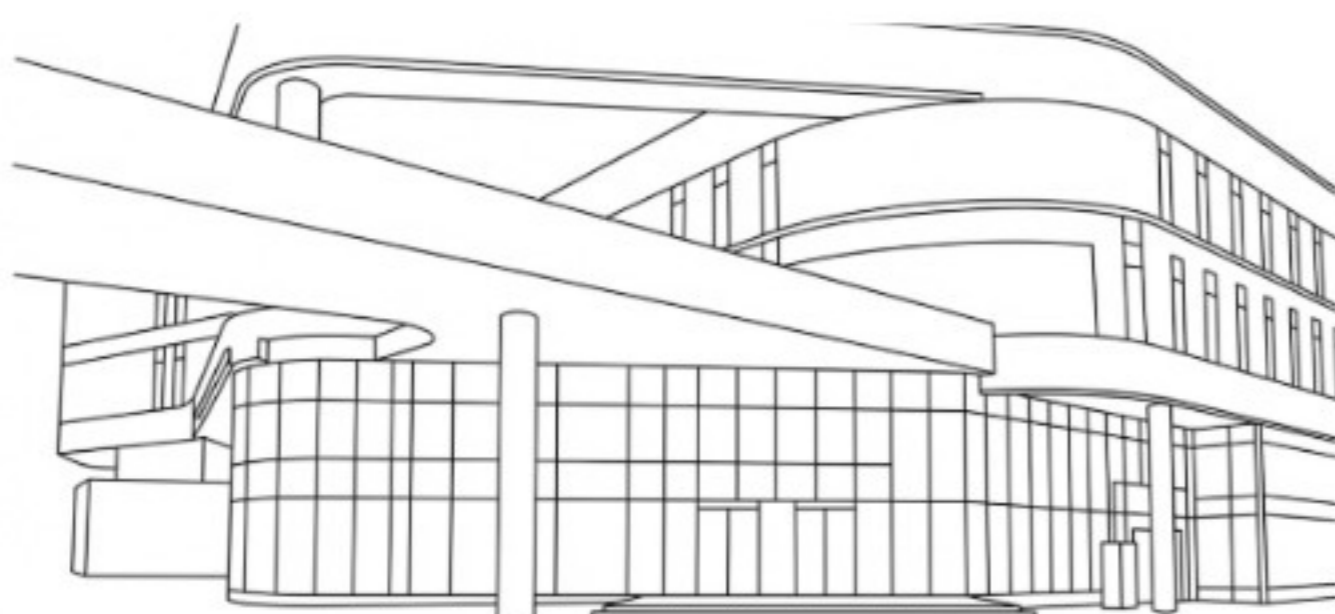
- One of the following documents authentications:
- **Apostille Certification, or**
- **Consular Legalization (Embassy Certifications)**

#### Chinese Track

Applicants must submit

- **TOPIK Level 2** or higher or
- Official proof of equivalent Korean language proficiency

All documents must be submitted in English or Korean, if issued in another language, an official translation must be provided.



# HOW TO APPLY

Join the Myongji University and become part of a vibrant community. For details on application procedures and deadlines, please visit [https://international.mju.ac.kr/enter/enter\\_eng\\_05.php?sMenu=eng25](https://international.mju.ac.kr/enter/enter_eng_05.php?sMenu=eng25). We strongly encourage applicants to submit their applications well in advance of the published deadlines.

## 1. Apply to your home University

To be eligible for exchange, you must be studying at one of our Exchange Partners. First, you must apply for exchange at your home university

## 2. Get nominated to the Myongji University

Your home university nominates you to the Myongji University if you meet their requirements.

## 3. Apply for the Myongji University Exchange Programme

Submit the application online. You can find the step by step application guide on the website. [https://international.mju.ac.kr/enter/enter\\_eng\\_05.php?sMenu=eng25](https://international.mju.ac.kr/enter/enter_eng_05.php?sMenu=eng25)

## 4. Apply for accommodation

Select the accommodation option during online application process.

- Seoul campus : Not available
- Yongin Campus : Available

## 5. Accept offer of admission

You will receive an email with an Offer of Place document if you meet the University's admission requirements. There is an introduction in the offer on how to accept your offer, You must do this in order to enrol.

## 6. Apply for student visa



Submit your 'Exchange Student Visa (D2-6)' to the respective Korean embassy or consulate as soon as you receive Offer of Place from the Myongji University. For details, visit our guide website by scanning the QR code.

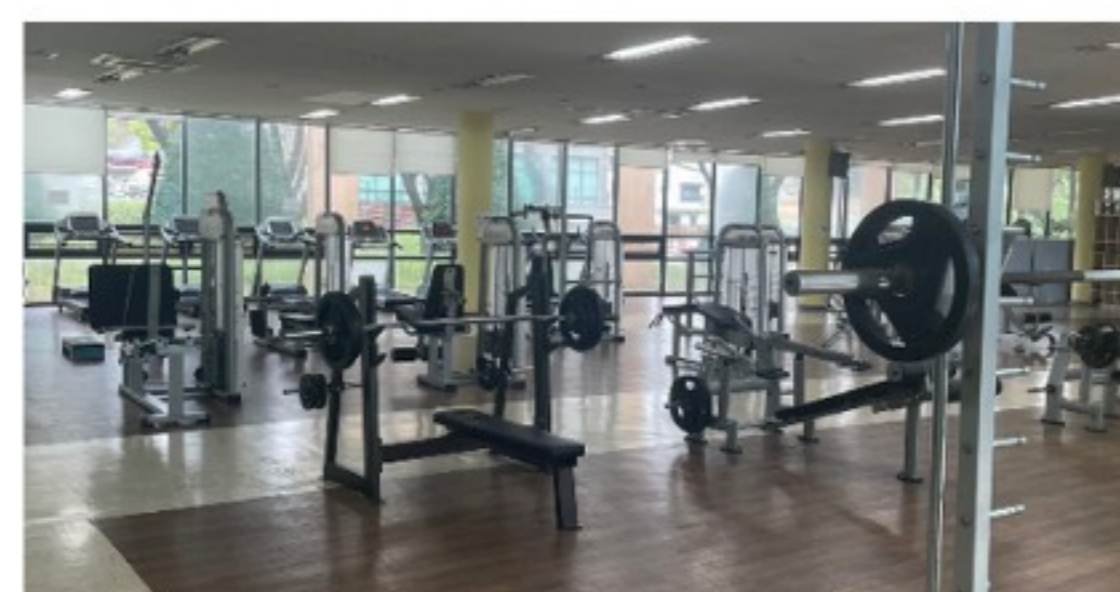
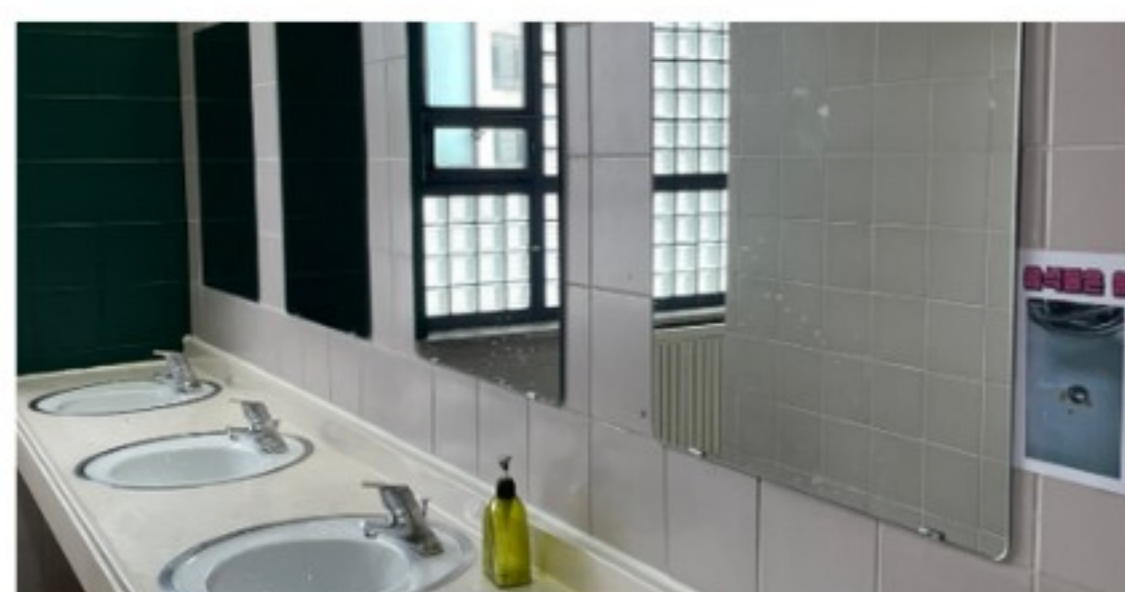
# Accommodation

## HOUSING & RESIDENCE OPTIONS

Accommodation is guaranteed for all exchange students studying at Yongin Campus. At the Seoul Campus, exchange students are not eligible to apply, so only off-campus housing is available. Students must respond to all deadlines and meet all deposit requirements in order to maintain their eligibility.

	Room configurations	Bathroom configurations	Meals	2026 residence semester fees – KRW	Recreation, sport and academic facilities
Natural Science Campus Dormitory	4-person in room	Shared	50 meal plan	Around 1,170,000KRW	Bed, desk, chair, dry rack, wireless internet, digital door lock shared kitchen, shared laundry room, shared dining room, etc.

Information and prices are for Spring 2026 and may change. Mandatory costs include a 50-meal plan.



# Living in Korea

While the cost of living in Seoul will depend, in part, on your personal lifestyle and preferences, As exchange students continue to pay tuition fees to their home institution, your primary considerations will be local living expenses; on average, a student residing in university accommodation spends approximately KRW 1,000,000 (780 USD) per month. The following breakdown provides a professional estimate to assist you in planning an enriching and worry-free semester in Korea.

## Cost of Living (Estimated Montly)

Monthly cost of living (USD)	STUDENT LIVING IN ON-CAMPUS	STUDENT LIVING OFF-CAMPUS
Rent	150 - 200	300-500
Food	50 Meal voucher incl.	250-300
Personal Expenses	250-300	250-300
Public transport	50 - 60	50 - 60
Health Insurance	50 - 70	50 - 70
<b>TOTAL</b>	<b>630</b>	<b>1230</b>

## GETTING AROUND: PUBLIC TRANSPORTATION

### The Essentials: T-Money Card

- **What it is:** A rechargeable smart card used for all buses, subways, and even some taxis and convenience stores.
- **Where to buy:** Any convenience store (CU, GS25, 7-Eleven) or subway station.
- **How to use:** Tap your card on the sensor when you board and before you get off. This ensures you receive free transfer discounts (up to 4 times within 30 minutes).

### Subway & Bus Tip

- **Subway:** Clean, punctual, and color-coded. Announcements are made in Korean and English.
- **Bus:** Color-coded by route (Blue: Main city, Green: Neighborhood, Red: Express).
- **Navigation Apps:** Google Maps is not ideal in Korea. Download Naver Map or KakaoMap for real-time bus arrivals and subway routes.

## INSURANCE : NHIS

All international students staying in Korea for more than 90 days are required to be covered by the National Health Insurance Service (NHIS).

### 1. Automatic Enrollment

- **Eligibility:** Once you receive your RC (Residence Card) and your stay exceeds 90 days, you are automatically enrolled.
- **Timing:** Your coverage usually begins from the date of your Alien Registration.

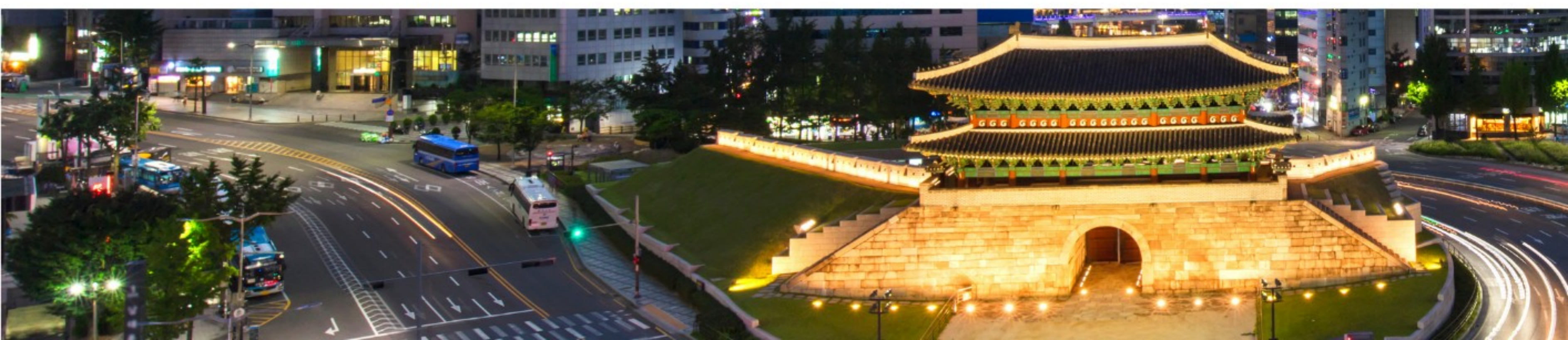
### 2. Why is it important?

- **Broad Coverage:** Includes dental, oriental medicine, health check-ups, and most hospital visits.
- **Legal Requirement:** Failure to pay may lead to restrictions on extending your visa or re-entering the country.

You do not need to apply separately; the NHIS will track your status via the Immigration Office.

### 💡 Tip for Students

Keep your address updated! If you move, you must report your new address to the Immigration Office within 14 days. Otherwise, your insurance bills will go to the wrong place, leading to unpaid fees and late penalties.



# Student Support

As an exchange student, your time in Korea is a precious, short-term opportunity. Myongji University is dedicated to making it truly exceptional. We offer a wide range of sporting, cultural, and recreational activities, ensuring that your unique needs are anticipated and met with care from the moment of your arrival until your departure.

## Semester Cultural Events

Myongji University organises a variety of vibrant cultural programmes each semester to ensure exchange students fully immerse themselves in Korean culture and campus life.

## Main Seasonal Events

- **Spring Semester: World Festival**

A global celebration where students from all over the world share their cultures through food, performances, and interaction.

- **Fall Semester: Games Day**

An energetic day of sports and team-building activities to foster friendship among international and Oulami students.

## Special Activities & Programmes

Whilst our specific offerings vary each term to provide fresh and engaging experiences, we regularly host a diverse range of activities, including:

- **Traditional Arts:** Taekwondo classes and Korean cookery workshops.
- **K-Culture:** K-POP dance classes and excursions to professional sporting events.
- **Wellness & Creativity:** Art psychotherapy sessions and creative workshops.

## Stay Connected

Follow us for the latest updates, event news, and a glimpse into campus life!



@o\_ulami

@mju\_international

## Online Guide & Resources

Scan the QR code or visit our website for the full Exchange Guide and essential resources.



## International Student Outreach Club (Oulami)

### About Oulami

Oulami is Myongji University's official international student outreach club. It is designed to assist international students from around the world in adjusting smoothly to life in Korea through dedicated peer support.

### Key Programs & Support

#### Academic & Campus Support

Oulami provides practical assistance with course registration and comprehensive guidance on navigating campus facilities.

#### Cultural Activities & Excursions

Oulami plans various cultural events and excursions, offering students opportunities to experience Korean traditions and explore local attractions.

#### 1:2 Korean Tutoring Program

To ensure personalized language support, each exchange student participates in a 1:2 tutoring program (one Myongji student to two exchange students) for at least nine sessions per semester.

#### WhatsApp Communication Support

Managed WhatsApp groups facilitate smooth communication, providing timely updates and essential support throughout the semester.

#### Multilingual Peer Mentorship

Proficient in various foreign languages, Oulami members serve as the first Korean friends for international students, offering guidance on both language and daily campus life.





# Short Term Programme (Summer/Winter)

## Short-Term Korean Language & Culture Program

Dive into the heart of Korea with Myongji University's intensive seasonal programs. Designed for students who want to master the Korean language and experience authentic culture during their vacation.

### Intensive Korean Language Course

Focus on your communicative competence with our expert-led language tracks.

- **Levels:** Beginner to Advanced (Placement test required).
- **Curriculum:** Speaking, Listening, Reading, and Writing with a focus on real-life conversation.
- **Class Hours:** 15 hours per week (Total 45~60 hours depending on the session).

### Cultural Immersion & Field Trips

Take your learning outside the classroom with our signature "K-Excursions":

- **Historical Seoul:** Gyeongbokgung Palace & Bukchon Hanok Village.
- **Modern Korea:** K-Pop Dance Workshop & N Seoul Tower.
- **Hands-on Experience:** Traditional Korean Cooking & Taekwondo classes.

### Student Support & LIFE

- **MJU Global Supporters:** Don't navigate Korea alone! You will be matched with local MJU students who will help you practice Korean and explore hidden local spots.
- **On-Campus Housing:** Stay in our modern, safe dormitories located within easy reach of Seoul's major attractions.



- **When:** July/August (Summer) & January/February (Winter)
- **Duration:** 2 Weeks

"From your first 'Annyeong' to a lifelong connection with Korea—start your journey at Myongji University."

---

# ACADEMIC REGULATIONS & CREDIT TRANSFER

## Course Load Requirements

To ensure a balanced and successful academic experience, international exchange and visiting students must adhere to the following credit requirements per semester:

**Minimum Enrollment:** 12 Credits  
**Maximum Capacity:** 17 Credits

Most courses are weighted at 3 credits each, typically representing 3 contact hours per week. We recommend that students plan their schedules carefully to meet both our requirements and those of their home institution.

## Credit Transferability

All academic credits earned at our institution are designed to be globally compatible and transferable to your degree program at your home university. Upon successful completion of the semester, an official academic transcript will be issued to facilitate this process.

However, please be aware that the final decision on how many credits will be accepted and how they will be applied toward your major or elective requirements rests solely with your home institution.

## Credit Conversion

**Understanding the MJU Credit System**  
At our university, we follow a rigorous academic structure designed to meet international standards. To assist our international students, particularly those from Europe, we provide a clear conversion guide to the ECTS (European Credit Transfer and Accumulation System).

### Credit Load & Teaching Hours

Our credit system is based on the actual contact hours spent in the classroom.

- 1 MJU Credit = 15 Hours of Teaching (per semester)
- Standard 3-credit courses consist of 45 contact hours.
- Conversion Rate: 1 MJU Credit = 2 ECTS

## Academic Transcripts

**Academic Transcripts:** Upon completion of the semester, an official English transcript will be issued. This document will detail the MJU credits and grades earned, which your home university will use to finalize your credit transfer.

## Ensuring a Smooth Credit Transfer

To avoid any academic discrepancies or delays in graduation, we strictly advise all students to follow these steps:

1. **Consult Your Advisor:** Before departing, meet with your academic advisor or international office at your home university.
2. **Course Syllabus Review:** Share the syllabi of your intended courses with your department head to ensure the content aligns with your curriculum.
3. **Pre-Approval:** Obtain official written approval for your course selection. This ensures that the 12–17 credits you earn here will be seamlessly recognized toward your degree.
4. **Alternative Options:** It is wise to have 2–3 "backup" courses approved in case of schedule conflicts or fully booked classes.

---

## GRADING SYSTEM

Grade	Score	GPA	Description
A+	95 - 100	4.5	Excellent
A	90 - 94	4	Very good
B+	85 - 89	3.5	Good
B	80 - 84	3	Highly satisfactory
C+	75 - 79	2.5	Satisfactory
C	70 - 74	2	Fair/ Sufficient
D+	65 - 69	1.5	
D	60 - 64	1	
F	0 - 59	0	Fail

# WHAT YOU CAN STUDY

Since the English courses offered may vary each semester, please refer to the semester-specific course guide for details.

## Humanities Campus

### Humanities ◇

Language and Literature

Arabic Studies

History

Library and Information

Science

Art History

Philosophy

Creative Writing

Global Asian Culture

### Social Sciences ◇

Public Administration

Economics

Political Science and Diplomacy

Digital Media

Child Development and

Education

Youth Education and

Leadership

### Law ◇

Law

### Business Administration ◇

Business Administration

International Business and

Trade

Management Information

System

Global Business

### General Education ◇

Open Major

Convergence Major

### ICT Convergence ◇

Division of Software

Convergence

Applied Statistics

Artificial Intelligence

### Future Convergence ◇

Creative Convergence

Leadership

Social Welfare

Real Estate

Legal Administration

Psychotherapy

Future Convergence

Management

Tax Accounting

Multidisciplinary Design

## Natural Science Campus

### Natural Sciences ◇

Mathematics

Physics

Chemistry

Food and Nutrition

Biosciences and Bioinformatics

### Engineering ◇

Electrical

Electronic

Chemical

Materials Science

Environmental and Energy

Computer

Civil and Environmental

Transportation

Mechanical

Industrial and Management

Semiconductor

### ICT Convergence ◇

Information and Communications

Engineering

### Global Civil & Environmental

Engineering (English) ◇

### General Education ◇

Open Major

### Arts and Physical Education ◇

Division of Design

- Visual Design
- Industry Design
- Media Communication Design
- Fashion Design

Division of Sports

- Physical Education
- Sports & Leisure Studies
- Athletics Training & Coaching

Division of Arts

- Piano
- Voice
- Composition
- Film
- Musical Performance

Baduk Studies

### Architecture ◇

Division of Architecture

- Architecture
- Traditional Korean Architecture
- Space Design



**Accredited by  
IEQAS  
(International  
Education Quality  
Assurance System)  
since 2014**



명지대학교

### Contact us

34, Geobukgol-ro, Seodaemun-gu, Seoul, 03674,  
Rep. of KOREA

Email: [mju\\_inbound@mju.ac.kr](mailto:mju_inbound@mju.ac.kr)

Phone: +82 2 300 1512/9



<https://international.mju.ac.kr/index.php?sMenu=kor>



[@mju\\_exchange](#)



[www.youtube.com/  
@mjuniv](http://www.youtube.com/@mjuniv)



**MYONGJI**  
UNIVERSITY